



AAN DE MEUL

REFINED LUXURY

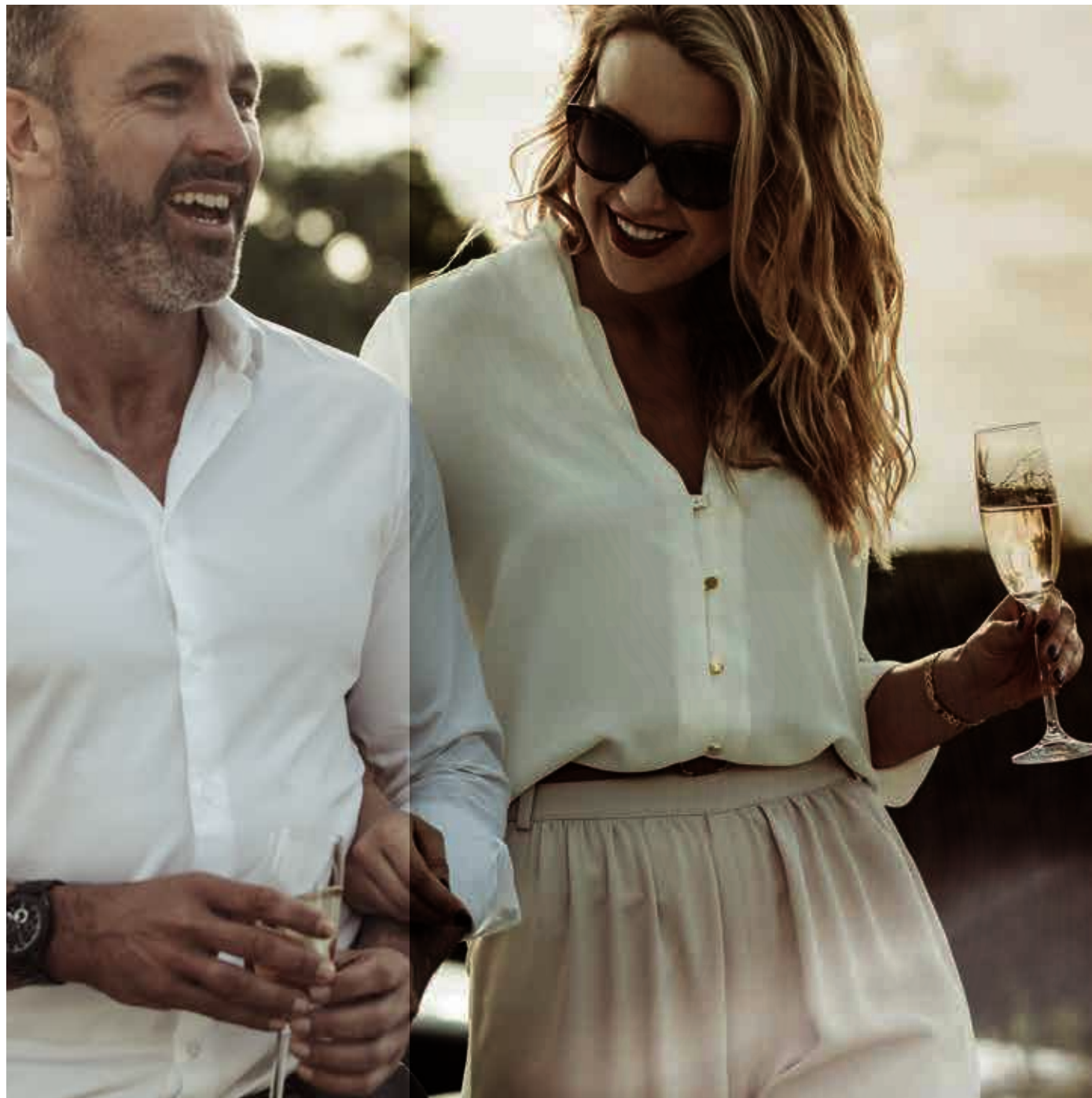
BY RÉMEY

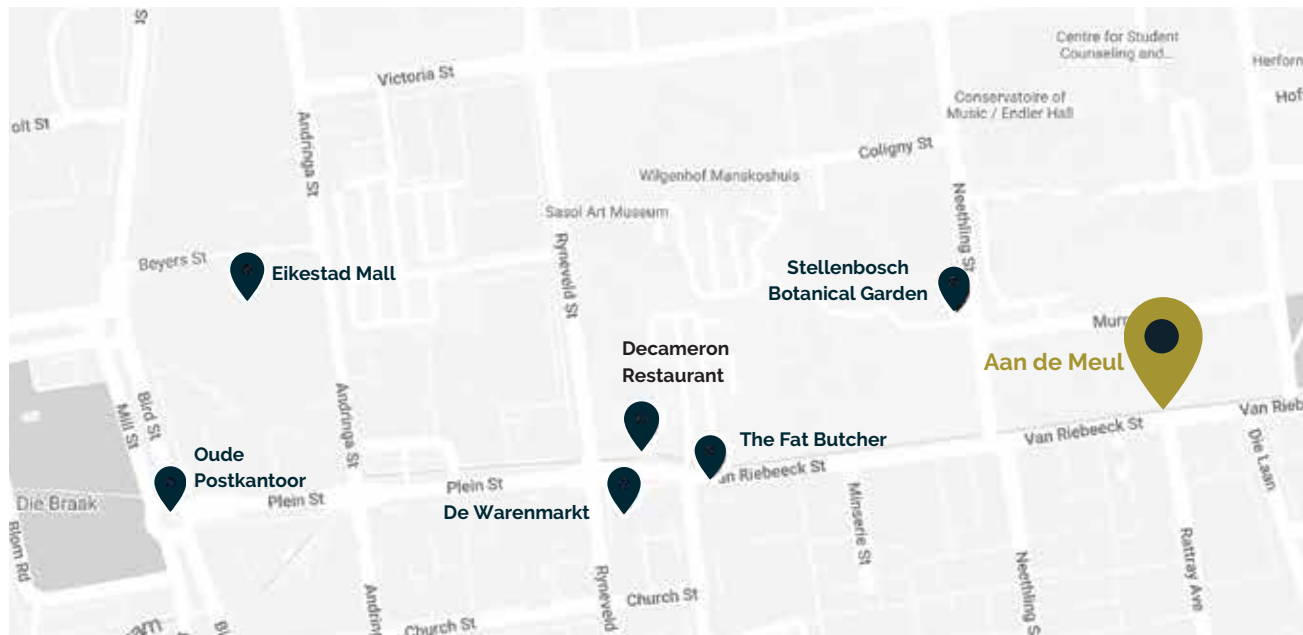


# A LIFE OF LUXURY

EXPERIENCE THE EPITOME OF  
LUXURY LIVING IN THE HEART  
OF STELLENBOSCH, WHERE  
OUR EXCLUSIVE HIGH-END  
APARTMENTS REDEFINE  
URBAN SOPHISTICATION.

Nestled in the vibrant centre of town,  
residents will find themselves immersed  
in a world of convenience and charm, with  
the added advantage of being close to  
most boardrooms in town.





# SOPHISTICATED STELLENBOSCH

‘A LIFETIME OF CLASS  
AND CONNECTION, WITHIN  
STEPS OF STELLENBOSCH.’

Imagine strolling down cobblestone streets to discover a culinary haven with renowned restaurants, perusing boutique shops for unique finds, and savouring moments at street cafés.





Living here isn't just about having a home; it's about being at the nexus of culture, cuisine, and community.

Embrace an active lifestyle with nearby hiking and cycling trails, renowned vineyards for wine enthusiasts, and a thriving cultural scene.







Elevate your lifestyle in a residence where every amenity and indulgence is within a leisurely walk, embracing the essence of refined living in one of South Africa's most coveted locations.



# BEAUTIFUL SYMMETRY

Combining a symmetrical form with linear proportions and strong articulation, there is a grandiosity to the facade that commands its place amongst the tree lined street of Stellenbosh.

Embracing a sophisticated and monochromatic palette, the materiality is both robust and timeless – designed to stand the test of time both physically and aesthetically.

The materiality and form is offset by a diversity of lush vegetation, creating a harmonious blend of natural and architectural elements.







# INSPIRED INTERIORS

Nestled amidst the picturesque vineyards and rolling hills of the Winelands, this luxury apartment embodies the essence of sophistication, comfort, and a seamless blend of nature and modern living.

The design vision for this exquisite retreat celebrates the region's rich heritage while providing an opulent and tranquil living space.

Aan De Meul has a neutral earthy colour palette that draws inspiration from the natural world, incorporating muted and organic hues that evoke a sense of warmth and tranquillity while intrepid textural elements propose a daring yet exciting essence to the space.











# FINISHED PERFECTION

We invite you to embark on the journey of crafting your dream home with our expertly curated materials palette.

Our commitment lies in offering a thoughtful selection of high-quality materials, each chosen to inspire and enhance your living space. Whether your design preferences lean towards a more muted or moody interior our materials palette is fully customisable to cater to your unique style.

Trust our Interior design team to bring your vision to life, as we collaborate with you to create a home that will surpass your expectations.











## CURATED APARTMENTS

---

THE EXECUTIVE CHOICE



# TWO BED LUXURY PENTHOUSE

SECOND FLOOR | APARTMENT 013

## KEY FEATURES:

### LUXURIOUS BEDROOM RETREATS:

Indulge in the epitome of comfort within the master bedroom, featuring a stylish en-suite bathroom. The second bedroom, adaptable in design, offers flexibility for guests or a home office, complemented by a separate guest bathroom.

### SEAMLESS OPEN-PLAN LIVING:

Experience an expansive living room and kitchen that effortlessly blend style and functionality. The kitchen serves as a culinary haven, ideal for entertaining or quiet moments of reflection.

### EXCLUSIVE OUTDOOR RETREATS:

Step onto the balcony with breathtaking views, providing a perfect setting for al fresco dining or simply soaking in the beauty of the Winelands.

### BONUS:

#### LOAD SHEDDING RESILIENCE:

Sophisticated backup power system ensures uninterrupted comfort during unexpected power outages or load shedding.

UNIT SIZE: 100 M<sup>2</sup>

ROOF GARDEN AREA: 34 M<sup>2</sup>

TOTAL EXCLUSIVE USE AND SECTION: 134 M<sup>2</sup>



SITE PLAN | UNIT 013

# TWO BED LUXURY PENTHOUSE

SECOND FLOOR | APARTMENT 012

## KEY FEATURES:

### LUXURIOUS BEDROOM RETREATS:

Indulge in the epitome of comfort within the master bedroom, featuring a stylish en-suite bathroom. The second bedroom, adaptable in design, offers flexibility for guests or a home office, complemented by a separate guest bathroom.

### SEAMLESS OPEN-PLAN LIVING:

Experience an expansive living room and kitchen that effortlessly blend style and functionality. The kitchen serves as a culinary haven, ideal for entertaining or quiet moments of reflection.

### EXCLUSIVE OUTDOOR RETREATS:

Step onto the balcony with breathtaking views, providing a perfect setting for al fresco dining or simply soaking in the beauty of the Winelands.

### BONUS:

#### LOAD SHEDDING RESILIENCE:

Sophisticated backup power system ensures uninterrupted comfort during unexpected power outages or load shedding.

UNIT SIZE: 95 M<sup>2</sup>

ROOF GARDEN AREA: 35 M<sup>2</sup>

TOTAL EXCLUSIVE USE AND SECTION: 130 M<sup>2</sup>



SITE PLAN | UNIT 012



# TWO BED LUXURY PENTHOUSE

SECOND FLOOR | APARTMENT 011

## KEY FEATURES:

### LUXURIOUS BEDROOM RETREATS:

Indulge in the epitome of comfort within the master bedroom, featuring a stylish en-suite bathroom. The second bedroom, adaptable in design, offers flexibility for guests or a home office, complemented by a separate guest bathroom.

### SEAMLESS OPEN-PLAN LIVING:

Experience an expansive living room and kitchen that effortlessly blend style and functionality. The kitchen serves as a culinary haven, ideal for entertaining or quiet moments of reflection.

### EXCLUSIVE OUTDOOR RETREATS:

Step onto the balcony with breathtaking views, providing a perfect setting for al fresco dining or simply soaking in the beauty of the Winelands.

### BONUS:

#### LOAD SHEDDING RESILIENCE:

Sophisticated backup power system ensures uninterrupted comfort during unexpected power outages or load shedding.

UNIT SIZE: 103 M<sup>2</sup>

ROOF GARDEN AREA: 35 M<sup>2</sup>

TOTAL EXCLUSIVE USE AND SECTION: 138 M<sup>2</sup>



SITE PLAN | UNIT 011

# TWO BED LUXURY APARTMENT

FIRST FLOOR | APARTMENT 010

## KEY FEATURES:

### LUXURIOUS BEDROOM RETREATS:

Indulge in the epitome of comfort within the master bedroom, featuring a stylish en-suite bathroom. The second bedroom, adaptable in design, offers flexibility for guests or a home office, complemented by a separate guest bathroom.

### SEAMLESS OPEN-PLAN LIVING:

Experience an expansive living room and kitchen that effortlessly blend style and functionality. The kitchen serves as a culinary haven, ideal for entertaining or quiet moments of reflection.

### EXCLUSIVE OUTDOOR RETREATS:

Step onto the balcony with breathtaking views, providing a perfect setting for al fresco dining or simply soaking in the beauty of the Winelands.

### BONUS:

#### LOAD SHEDDING RESILIENCE:

Sophisticated backup power system ensures uninterrupted comfort during unexpected power outages or load shedding.

UNIT SIZE: 95 M<sup>2</sup>

TOTAL EXCLUSIVE USE AND SECTION: 95 M<sup>2</sup>



SITE PLAN | UNIT 010



# ONE BED LUXURY APARTMENT

FIRST FLOOR | APARTMENT 009

## KEY FEATURES:

### MAIN BEDROOM AND EN-SUITE:

The master bedroom, complete with an en-suite bathroom, provides a private escape where luxury and convenience meet seamlessly.

### SEAMLESS OPEN-PLAN LIVING:

Experience an expansive living room and kitchen that effortlessly blend style and functionality. The kitchen serves as a culinary haven, ideal for entertaining or quiet moments of reflection.

### EXCLUSIVE OUTDOOR RETREATS:

Step onto the balcony with breathtaking views, providing a perfect setting for al fresco dining or simply soaking in the beauty of the Winelands.

### BONUS:

#### LOAD SHEDDING RESILIENCE:

Sophisticated backup power system ensures uninterrupted comfort during unexpected power outages or load shedding.

UNIT SIZE: 56 M<sup>2</sup>

TOTAL EXCLUSIVE USE AND SECTION: 56 M<sup>2</sup>



SITE PLAN | UNIT 009

# TWO BED LUXURY APARTMENT

FIRST FLOOR | APARTMENT 008

## KEY FEATURES:

### LUXURIOUS BEDROOM RETREATS:

Indulge in the epitome of comfort within the master bedroom, featuring a stylish en-suite bathroom. The second bedroom, adaptable in design, offers flexibility for guests or a home office, complemented by a separate guest bathroom.

### SEAMLESS OPEN-PLAN LIVING:

Experience an expansive living room and kitchen that effortlessly blend style and functionality. The kitchen serves as a culinary haven, ideal for entertaining or quiet moments of reflection.

### EXCLUSIVE OUTDOOR RETREATS:

Step onto the balcony with breathtaking views, providing a perfect setting for al fresco dining or simply soaking in the beauty of the Winelands.

### BONUS:

#### LOAD SHEDDING RESILIENCE:

Sophisticated backup power system ensures uninterrupted comfort during unexpected power outages or load shedding.

UNIT SIZE: 87 M<sup>2</sup>

TOTAL EXCLUSIVE USE AND SECTION: 87 M<sup>2</sup>



SITE PLAN | UNIT 008



# TWO BED LUXURY APARTMENT

FIRST FLOOR | APARTMENT 007

## KEY FEATURES:

### LUXURIOUS BEDROOM RETREATS:

Indulge in the epitome of comfort within the master bedroom, featuring a stylish en-suite bathroom. The second bedroom, adaptable in design, offers flexibility for guests or a home office, complemented by a separate guest bathroom.

### SEAMLESS OPEN-PLAN LIVING:

Experience an expansive living room and kitchen that effortlessly blend style and functionality. The kitchen serves as a culinary haven, ideal for entertaining or quiet moments of reflection.

### EXCLUSIVE OUTDOOR RETREATS:

Step onto the balcony with breathtaking views, providing a perfect setting for al fresco dining or simply soaking in the beauty of the Winelands.

### BONUS:

#### LOAD SHEDDING RESILIENCE:

Sophisticated backup power system ensures uninterrupted comfort during unexpected power outages or load shedding.

UNIT SIZE: 89 M<sup>2</sup>

TOTAL EXCLUSIVE USE AND SECTION: 89 M<sup>2</sup>



SITE PLAN | UNIT 007

# TWO BED LUXURY APARTMENT

FIRST FLOOR | APARTMENT 006

## KEY FEATURES:

### LUXURIOUS BEDROOM RETREATS:

Indulge in the epitome of comfort within the master bedroom, featuring a stylish en-suite bathroom. The second bedroom, adaptable in design, offers flexibility for guests or a home office, complemented by a separate guest bathroom.

### SEAMLESS OPEN-PLAN LIVING:

Experience an expansive living room and kitchen that effortlessly blend style and functionality. The kitchen serves as a culinary haven, ideal for entertaining or quiet moments of reflection.

## BONUS:

### LOAD SHEDDING RESILIENCE:

Sophisticated backup power system ensures uninterrupted comfort during unexpected power outages or load shedding.

UNIT SIZE: 66 M<sup>2</sup>

TOTAL EXCLUSIVE USE AND SECTION: 66 M<sup>2</sup>



SITE PLAN | UNIT 006



# TWO BED LUXURY APARTMENT

GROUND FLOOR | APARTMENT 005

## KEY FEATURES:

### LUXURIOUS BEDROOM RETREATS:

Indulge in the epitome of comfort within the master bedroom, featuring a stylish en-suite bathroom. The second bedroom, adaptable in design, offers flexibility for guests or a home office, complemented by a separate guest bathroom.

### SEAMLESS OPEN-PLAN LIVING:

Experience an expansive living room and kitchen that effortlessly blend style and functionality. The kitchen serves as a culinary haven, ideal for entertaining or quiet moments of reflection.

### EXCLUSIVE OUTDOOR RETREATS:

Extend your living space to the outdoors with a private patio that invites you to savour your morning coffee or unwind in the evening breeze. Additionally, a private garden provides a secluded oasis, perfect for entertaining guests, gardening, or simply enjoying the serenity of your own green retreat.

## BONUS:

### LOAD SHEDDING RESILIENCE:

Sophisticated backup power system ensures uninterrupted comfort during unexpected power outages or load shedding.

UNIT SIZE: 95 M<sup>2</sup>

GARDEN AREA: 39 M<sup>2</sup>

TOTAL EXCLUSIVE USE AND SECTION: 134 M<sup>2</sup>



SITE PLAN | UNIT 005

# ONE BED LUXURY APARTMENT

GROUND FLOOR | APARTMENT 004

## KEY FEATURES:

### MAIN BEDROOM AND EN-SUITE:

The master bedroom, complete with an en-suite bathroom, provides a private escape where luxury and convenience meet seamlessly.

### SEAMLESS OPEN-PLAN LIVING:

Experience an expansive living room and kitchen that effortlessly blend style and functionality. The kitchen serves as a culinary haven, ideal for entertaining or quiet moments of reflection.

### EXCLUSIVE OUTDOOR RETREATS:

Extend your living space to the outdoors with a private patio that invites you to savour your morning coffee or unwind in the evening breeze. Additionally, a private garden provides a secluded oasis, perfect for entertaining guests, gardening, or simply enjoying the serenity of your own green retreat.

### BONUS:

#### LOAD SHEDDING RESILIENCE:

Sophisticated backup power system ensures uninterrupted comfort during unexpected power outages or load shedding.

UNIT SIZE: 56 M<sup>2</sup>

GARDEN AREA: 63 M<sup>2</sup>

TOTAL EXCLUSIVE USE AND SECTION: 119 M<sup>2</sup>



SITE PLAN | UNIT 004



# TWO BED LUXURY APARTMENT

GROUND FLOOR | APARTMENT 003

## KEY FEATURES:

### LUXURIOUS BEDROOM RETREATS:

Indulge in the epitome of comfort within the master bedroom, featuring a stylish en-suite bathroom. The second bedroom, adaptable in design, offers flexibility for guests or a home office, complemented by a separate guest bathroom.

### SEAMLESS OPEN-PLAN LIVING:

Experience an expansive living room and kitchen that effortlessly blend style and functionality. The kitchen serves as a culinary haven, ideal for entertaining or quiet moments of reflection.

### EXCLUSIVE OUTDOOR RETREATS:

Extend your living space to the outdoors with a private patio that invites you to savour your morning coffee or unwind in the evening breeze. Additionally, a private garden provides a secluded oasis, perfect for entertaining guests, gardening, or simply enjoying the serenity of your own green retreat.

## BONUS:

### LOAD SHEDDING RESILIENCE:

Sophisticated backup power system ensures uninterrupted comfort during unexpected power outages or load shedding.

UNIT SIZE: 87 M<sup>2</sup>

GARDEN AREA: 102 M<sup>2</sup>

TOTAL EXCLUSIVE USE AND SECTION: 189 M<sup>2</sup>



SITE PLAN | UNIT 003

# TWO BED LUXURY APARTMENT

GROUND FLOOR | APARTMENT 002

## KEY FEATURES:

### LUXURIOUS BEDROOM RETREATS:

Indulge in the epitome of comfort within the master bedroom, featuring a stylish en-suite bathroom. The second bedroom, adaptable in design, offers flexibility for guests or a home office, complemented by a separate guest bathroom.

### SEAMLESS OPEN-PLAN LIVING:

Experience an expansive living room and kitchen that effortlessly blend style and functionality. The kitchen serves as a culinary haven, ideal for entertaining or quiet moments of reflection.

### EXCLUSIVE OUTDOOR RETREATS:

Extend your living space to the outdoors with a private patio that invites you to savour your morning coffee or unwind in the evening breeze. Additionally, a private garden provides a secluded oasis, perfect for entertaining guests, gardening, or simply enjoying the serenity of your own green retreat.

## BONUS:

### LOAD SHEDDING RESILIENCE:

Sophisticated backup power system ensures uninterrupted comfort during unexpected power outages or load shedding.

UNIT SIZE: 89 M<sup>2</sup>

GARDEN AREA: 101 M<sup>2</sup>

TOTAL EXCLUSIVE USE AND SECTION: 190 M<sup>2</sup>



SITE PLAN | UNIT 002



# TWO BED LUXURY APARTMENT

GROUND FLOOR | APARTMENT 001

## KEY FEATURES:

### LUXURIOUS BEDROOM RETREATS:

Indulge in the epitome of comfort within the master bedroom, featuring a stylish en-suite bathroom. The second bedroom, adaptable in design, offers flexibility for guests or a home office, complemented by a separate guest bathroom.

### SEAMLESS OPEN-PLAN LIVING:

Experience an expansive living room and kitchen that effortlessly blend style and functionality. The kitchen serves as a culinary haven, ideal for entertaining or quiet moments of reflection.

### EXCLUSIVE OUTDOOR RETREATS:

Extend your living space to the outdoors with a private garden that invites you to savour your morning coffee or unwind in the evening breeze. Perfect for entertaining guests, gardening, or simply enjoying the serenity of your own green retreat.

## BONUS:

### LOAD SHEDDING RESILIENCE:

Sophisticated backup power system ensures uninterrupted comfort during unexpected power outages or load shedding.

UNIT SIZE: 66 M<sup>2</sup>

GARDEN AREA: 28 M<sup>2</sup>

TOTAL EXCLUSIVE USE AND SECTION: 94 M<sup>2</sup>



SITE PLAN | UNIT 001

# HISTORIC VICTORIAN HOUSE

GROUND FLOOR | UNIT 014

## KEY FEATURES:

### THREE LUXURIOUS BEDROOMS WITH BATHROOMS:

Immerse yourself in the ultimate comfort of three spacious bedrooms, one private en-suite bathroom and one family bathroom. Revel in the convenience and privacy that comes with this thoughtful layout, ensuring a tranquil retreat for every member of your household.

### OPEN-PLAN LIVING ROOM AND KITCHEN:

This innovative design not only fosters a sense of togetherness but also enhances the flow of natural light, creating a bright and inviting atmosphere throughout.

### PRIVATE PATIO AND BACKYARD:

Extend your living space to the outdoors with a charming Victorian stoep that invites you to savour your morning coffee or unwind in the evening breeze. Additionally, a private garden provides a secluded oasis, perfect for entertaining guests, gardening, or simply enjoying the serenity of your own green retreat.

### BONUS:

#### LOAD SHEDDING RESILIENCE:

Sophisticated backup power system ensures uninterrupted comfort during unexpected power outages or load shedding.

UNIT SIZE: 208 M<sup>2</sup>

GARDEN AREA: 121 M<sup>2</sup>

TOTAL EXCLUSIVE USE AND SECTION: 329 M<sup>2</sup>



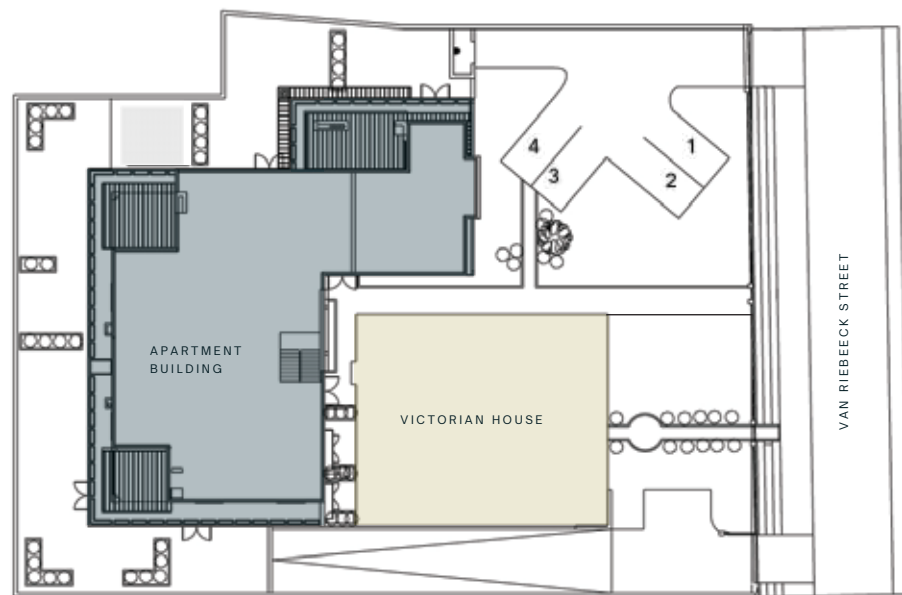
SITE PLAN | UNIT 014



A LIFE OF  
BEAUTY AND  
COMFORT



# BESPOKE SPACES



SITE PLAN  
GROUND FLOOR SITE PLAN



PARKING GARAGE  
UNDERGROUND PARKING AND STORAGE ROOMS





## FIRST FLOOR FLOORPLAN







# GET IN TOUCH

BERTUS SWANEPOEL  
REMEY PROPERTY GROUP  
MOBILE: +27 76 290 2410  
EMAIL: [bertus@remey.co.za](mailto:bertus@remey.co.za)

Disclaimer: The interior or architectural design shown may be subject to alterations or modifications at the discretion of the developer or as necessitated by authorities.